

# S4 Training

## Altitude and Sensor Comparisons

Rob Foster  
JerryLiang





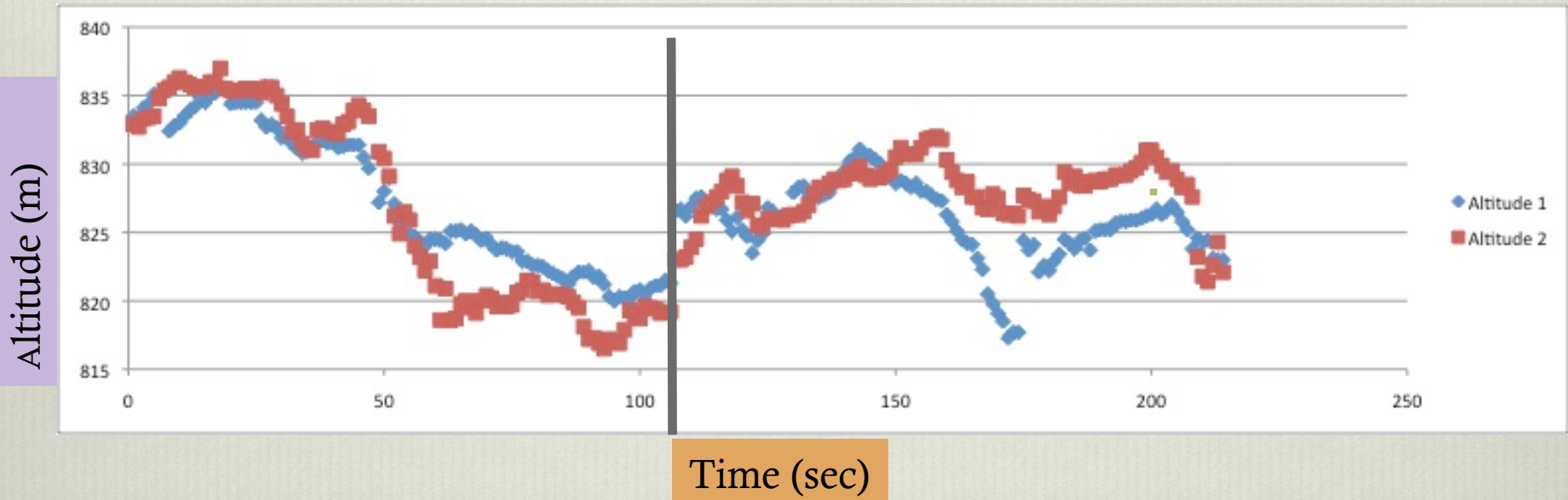
Google earth

1994

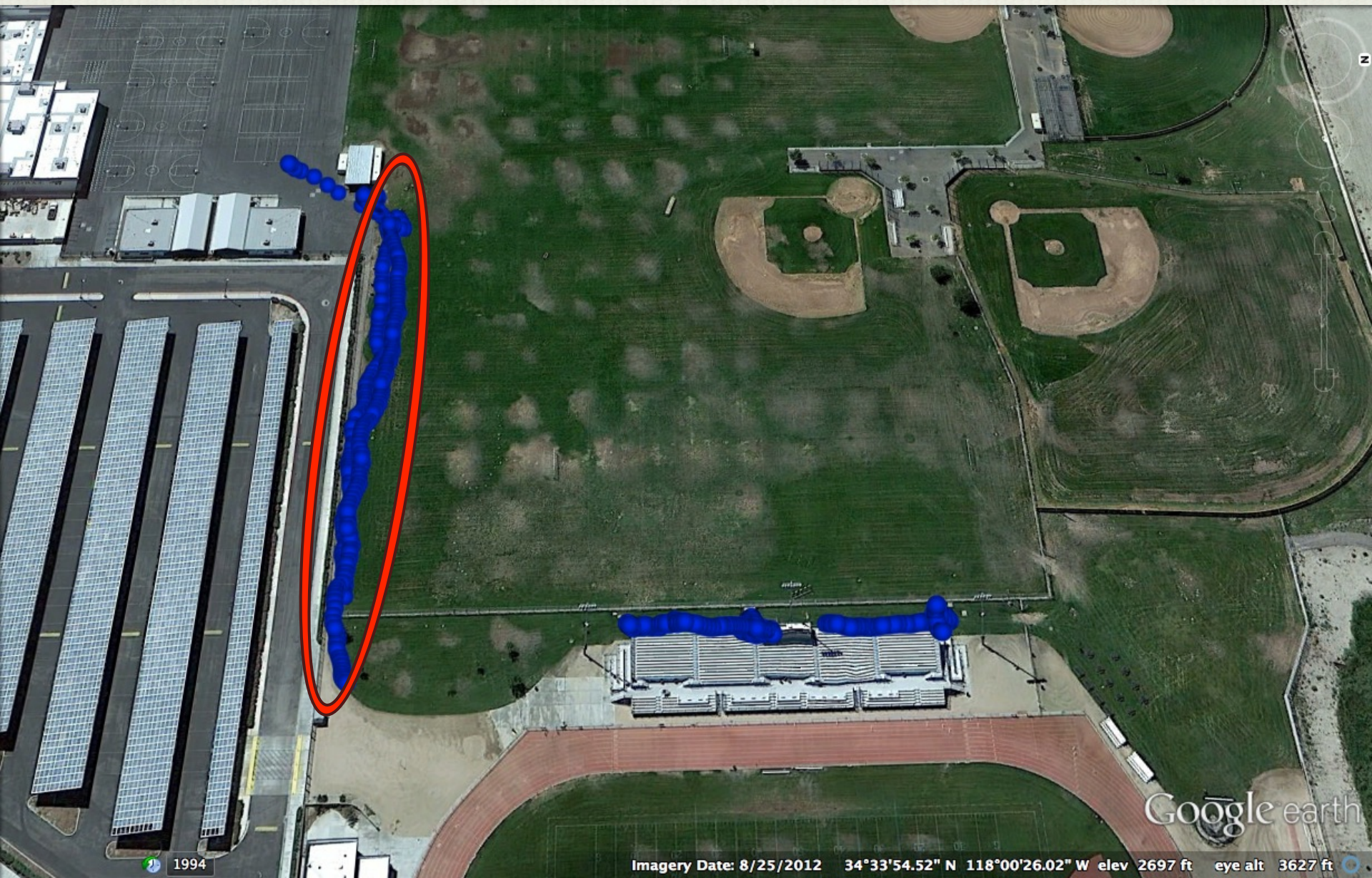
Imagery Date: 8/25/2012 34°33'54.52" N 118°00'26.02" W elev 2697 ft eye alt 3627 ft



# Altitude



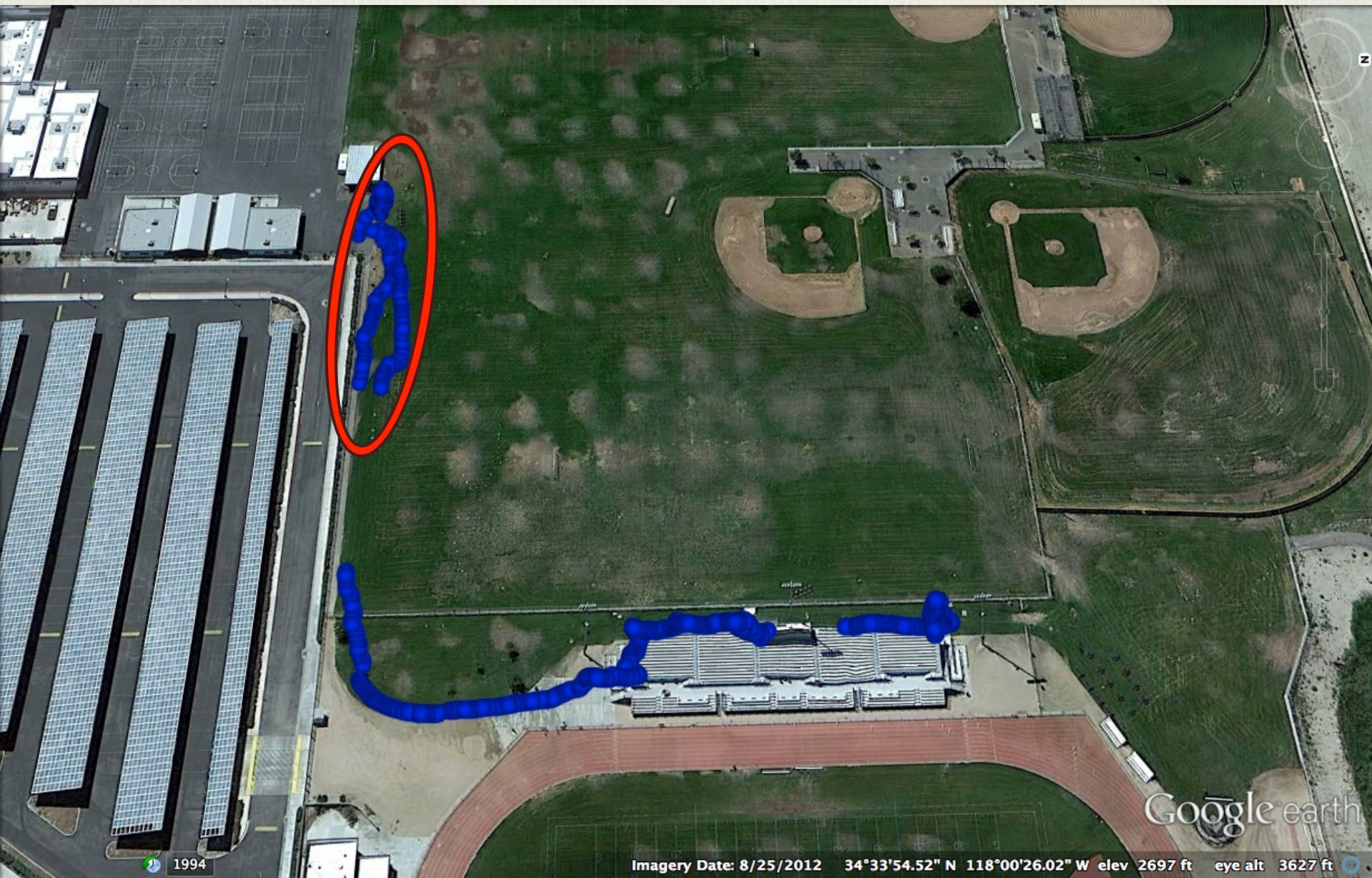




1994

Imagery Date: 8/25/2012 34°33'54.52" N 118°00'26.02" W elev 2697 ft eye alt 3627 ft

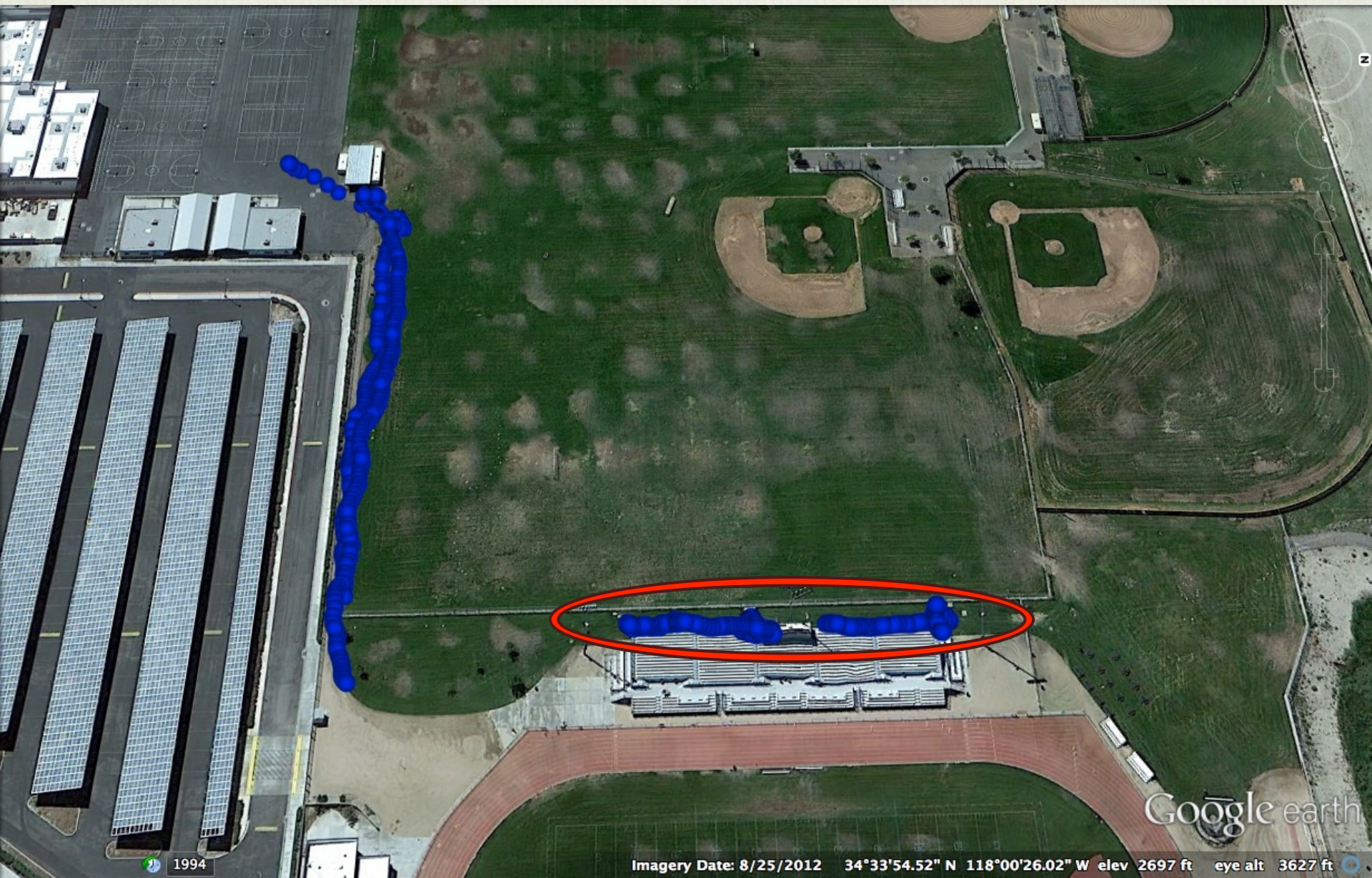




1994

Imagery Date: 8/25/2012 34°33'54.52" N 118°00'26.02" W elev 2697 ft eye alt 3627 ft



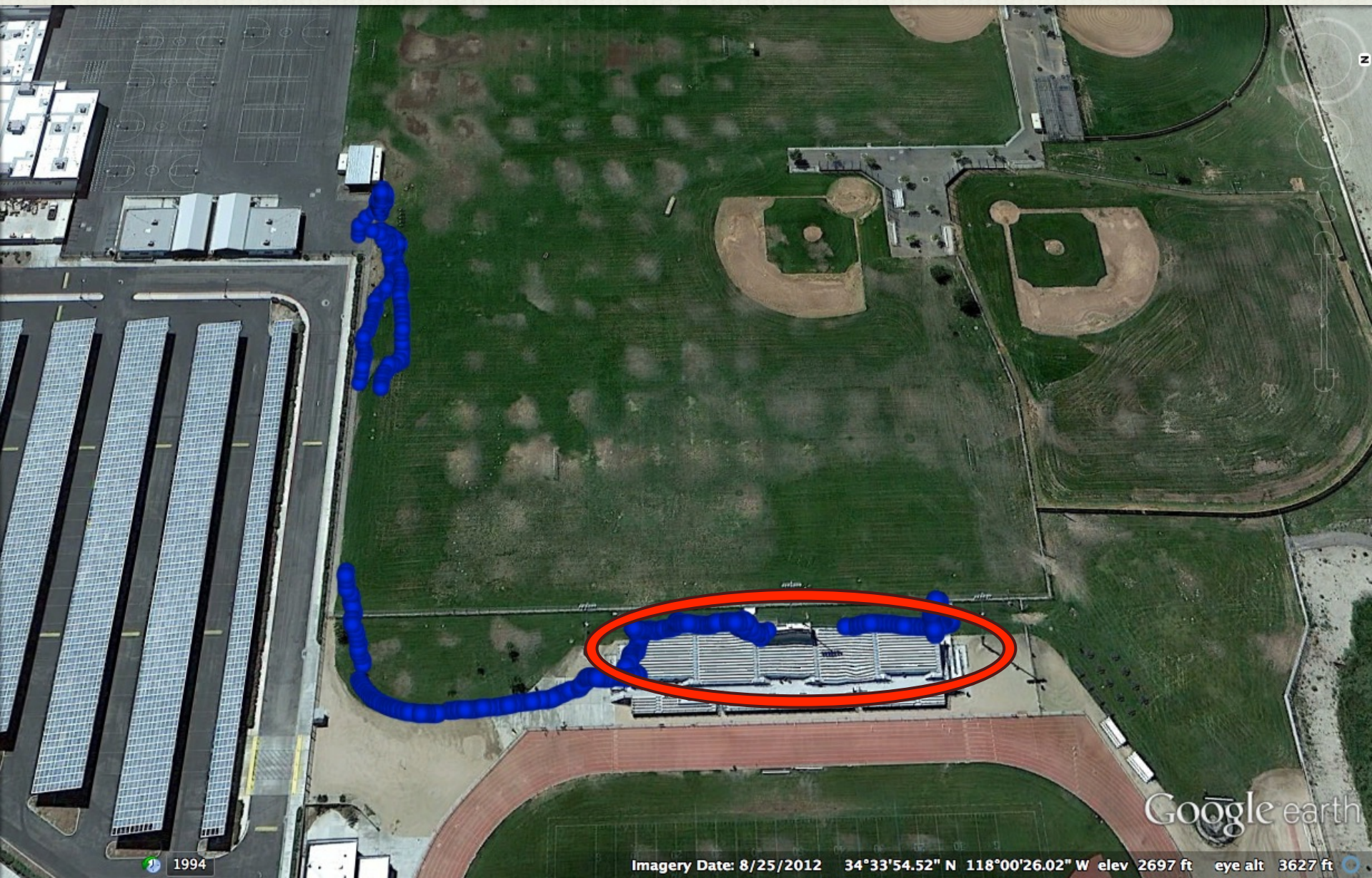


1994

Imagery Date: 8/25/2012 34°33'54.52" N 118°00'26.02" W elev 2697 ft eye alt 3627 ft

Google earth





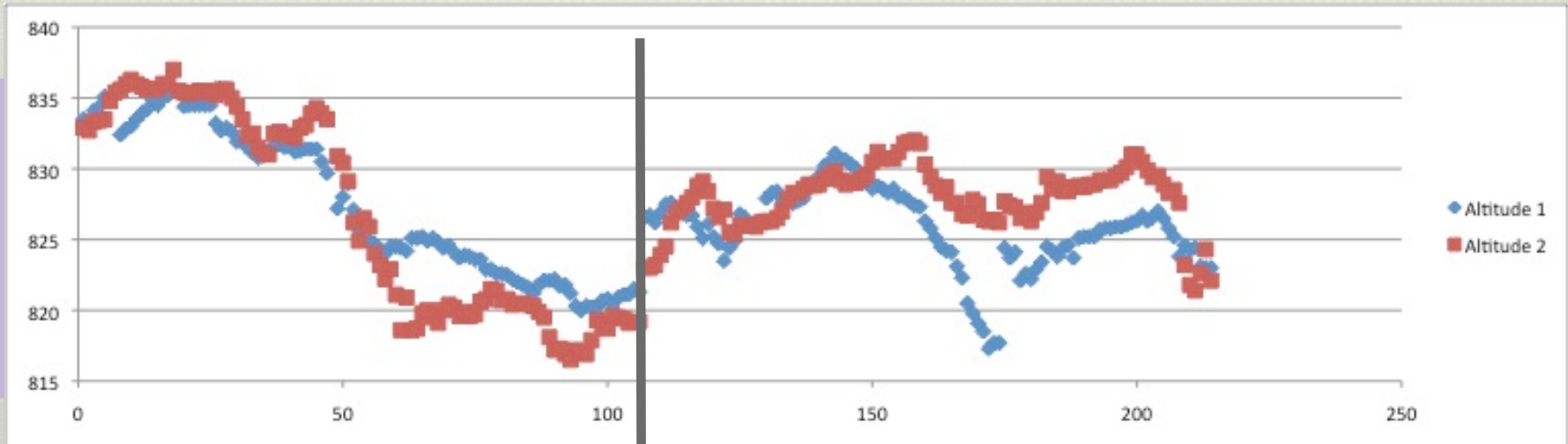
1994

Imagery Date: 8/25/2012 34°33'54.52" N 118°00'26.02" W elev 2697 ft eye alt 3627 ft



# Altitude

Altitude (meter)



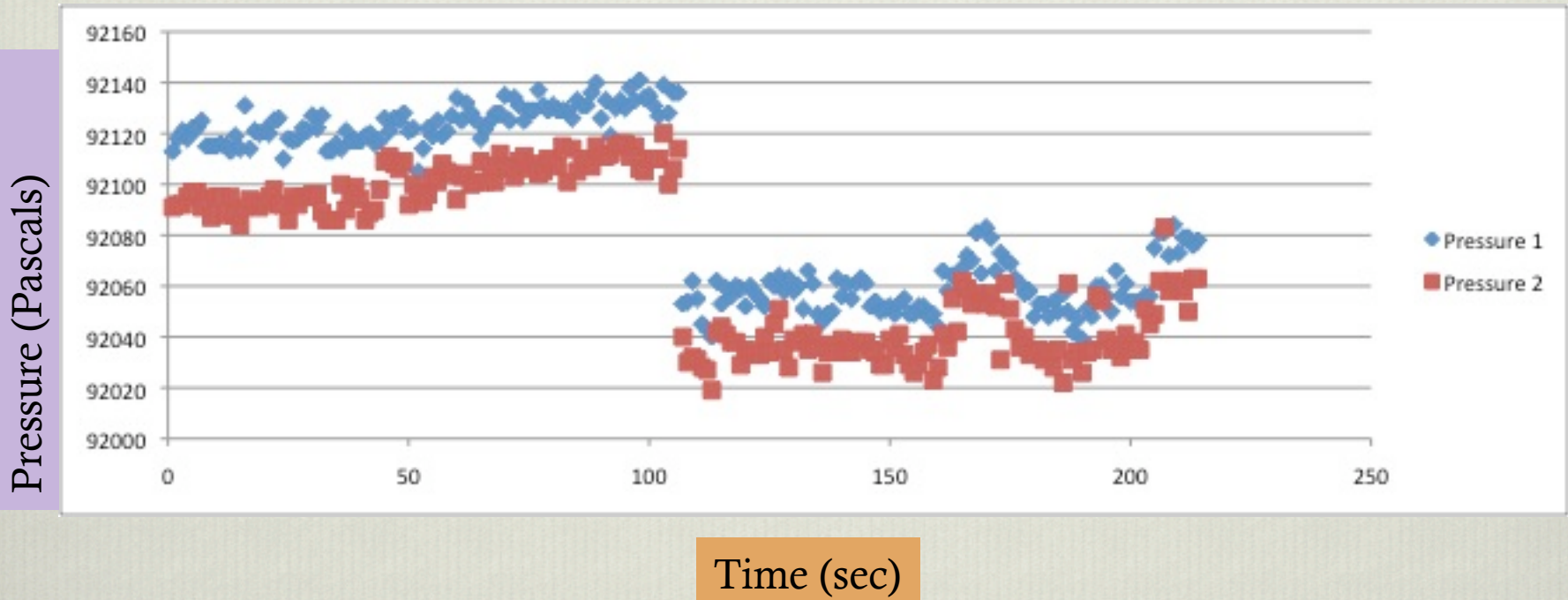
Time (sec)

First leg alt 1 average = 819.78 m  
First leg alt 2 average = 818.94 m

Second leg alt 1 average = 825.73 m  
Second leg alt 2 average = 827.87 m



# Pressure



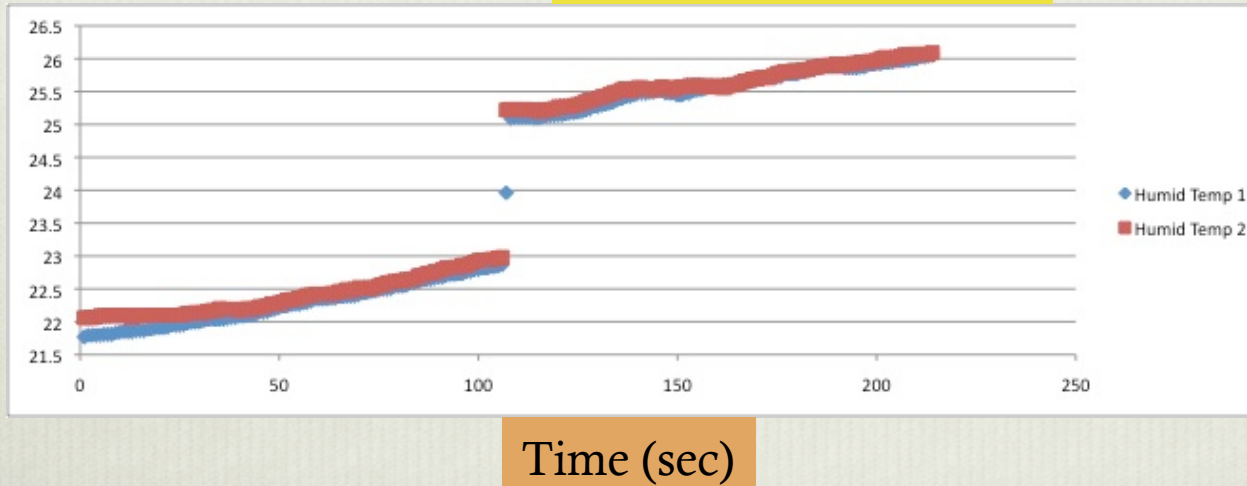
First leg Pressure 1 average = 92124.3 Pa  
First leg Pressure 2 average = 92100.78 Pa

Sec. leg Pressure 1 average = 92058.69 Pa  
Sec. leg Pressure 2 average = 92040.12 Pa



# Temperature

Temperature (celsius)

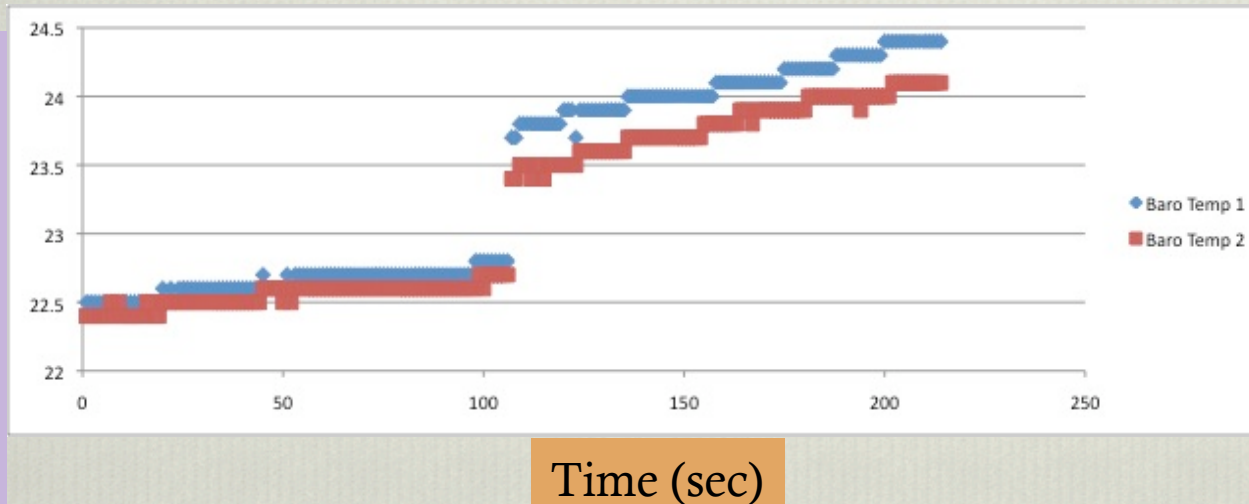


Time (sec)

First leg Temp 1  
average = 22.26 C  
First leg Temp 2  
average = 22.4 C

Second leg Temp 1  
average = 25.56 C  
Second leg Temp 2  
average = 25.64 C

Temperature (celsius)



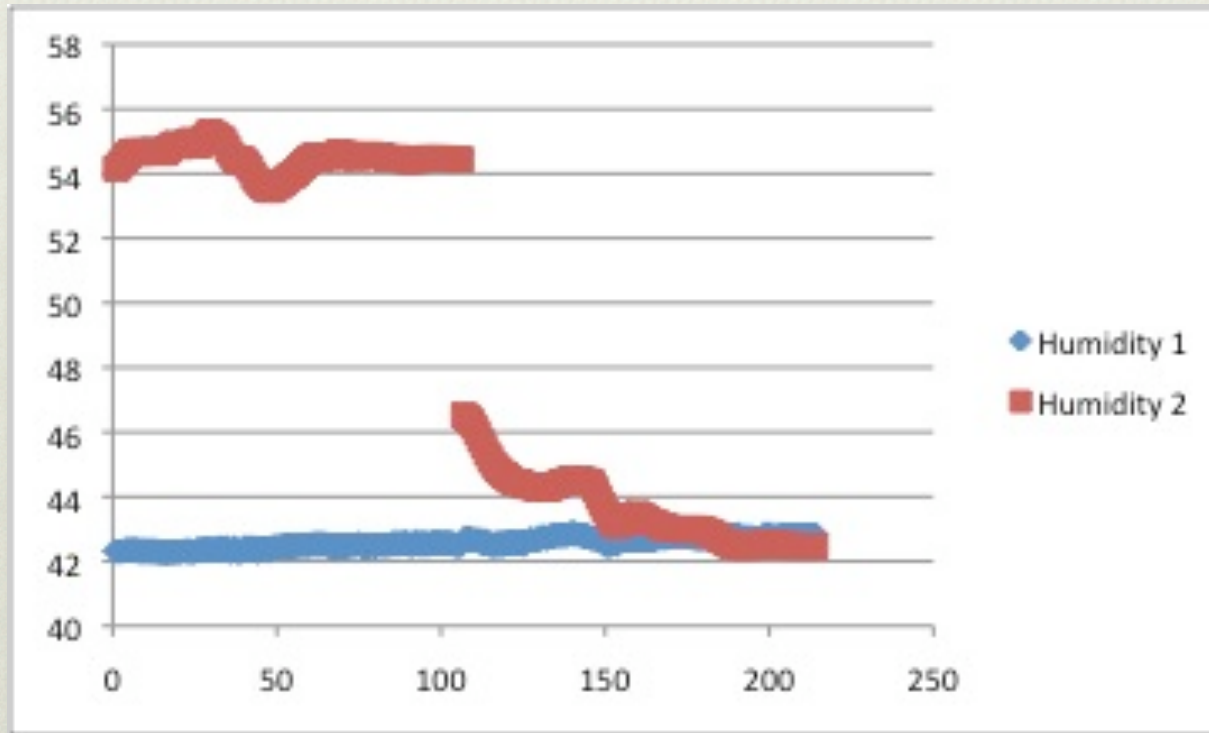
Time (sec)

First leg Temp 1  
average = 22.64 C  
First leg Temp 2  
average = 22.55 C

Second leg Temp 1  
average = 24.1 C  
Second leg Temp 2  
average = 23.8 C



# Humidity



Time (sec)

First leg Humidity 1 average = 42.43%  
First leg Humidity 2 average = 54.48%

Second leg Humidity 1 average = 42.71%  
Second leg Humidity 2 average = 43.6%